

DiluFlow

Gravimetric dilutors for solid samples



The best solution for your dilutions!

interscience



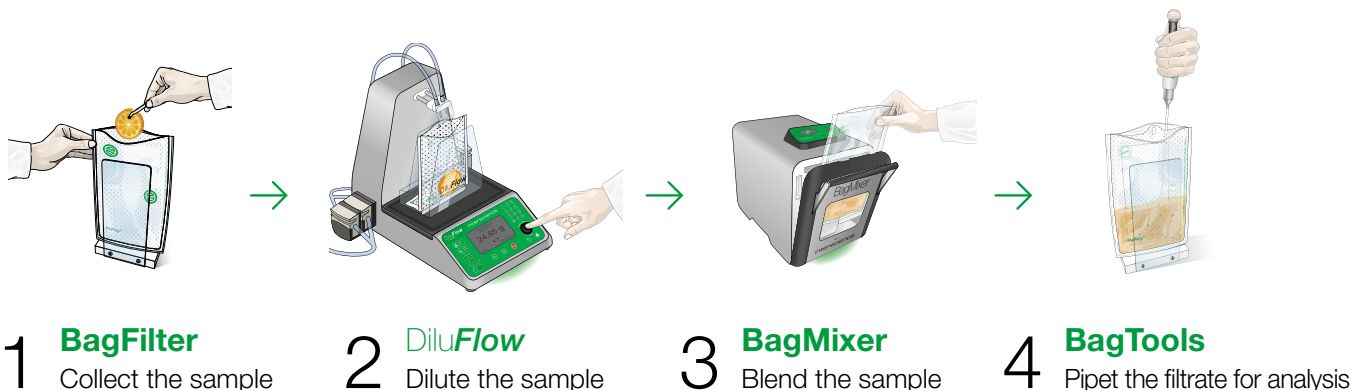
Our quality for your lab

- Full range of products for microbiological analyses
- Leadership for innovative products
- Worldwide distribution network
- Designed and Made in France




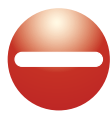

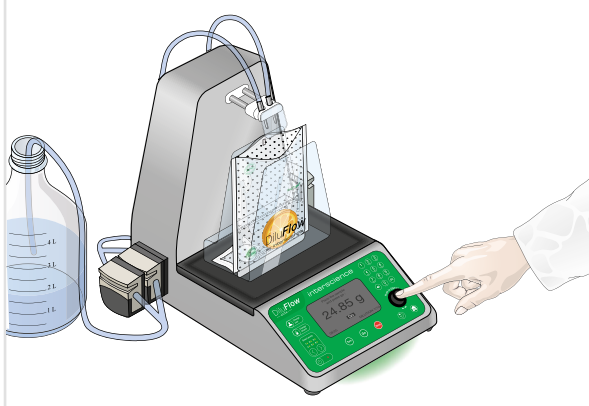
BagSystem

for the best sample preparation



Why use a gravimetric dilutor?

Dilu**Flow** gravimetric dilutors enable the automatic dilution of the sample with perfect reliability. See the following advantages:

<p>MANUAL DILUTION</p>  <p>Step 1 Weigh the sample</p> <p>Step 2 Add manually the diluent</p>	 	<p>AUTOMATED DILUTION WITH DiluFlow</p>  <p>Place the sample and start the dilution The appropriate quantity of diluent is added in a matter of seconds.</p>
---	---	--

Time-consuming ■

Inaccurate: ■
Direct impact on final result

Not reproducible ■

Not secure: ■
The bag is not maintained

Not automatically traceable ■

■ **Quick:** 8 seconds* for 225 mL

■ **Accurate:** < 1% of sample weighing
As little as < 1% of dispensing (in standard or accurate mode)

■ **Reproducible**

■ **Secured:** The bag is maintained with BagOpen bag opener

■ **Traceable:** with LIMS, printer or Excel™

* Dilution time for a 25 g sample diluted at 1/10 on a DiluFlow Elite with booster kit in fast mode

Easy-to-use efficient & connected 3 models for optimal dilutions



DiluFlow

DiluFlow Pro

DiluFlow Elite

DiluFlow Elite 1 kg

Ultra low profile	✓	✓	✓	✓
DripTray	✓	✓	✓	✓
Robotic arm	-	✓	✓	✓
Jumbo kit option	-	✓	✓ ⁽³⁾	-
Programmable	-	-	✓	✓
Full traceability	-	-	✓	✓
Up to 6 pumps	-	-	✓	✓
Multi-Dispensing	-	-	✓	✓



Traceability

Printer, USB stick⁽¹⁾, Excel™, Open Office™, CSV, LIMS⁽¹⁾



Up to 6 diluents

With 4 extra connectable pumps⁽¹⁾

IN COMPLIANCE WITH



304 L stainless steel casing

For easy cleaning and long-lasting

Robotic arm⁽²⁾

Easy sample dropping
Avoids contamination
Saves time

Demo video
Scan me!



GeckoGrip

No more adhesive gums!
Ultra adhesive, hygienic and long lasting

PATENTED

Ultra low profile

Perfect for a laminar flow
Ergonomic: no more
musculoskeletal disorders

Kit booster

2 times faster

Only 30 cm!



High accuracy weighing scale

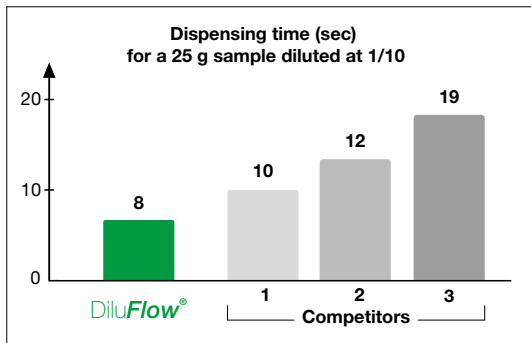
Weighing accuracy up to 99%

Removable DripTray

Easy to keep your DiluFlow clean
PATENTED

(1) Only on DiluFlow Elite (2) Only on DiluFlow Pro and DiluFlow Elite (3) Only on DiluFlow Elite 5 kg

Unique features



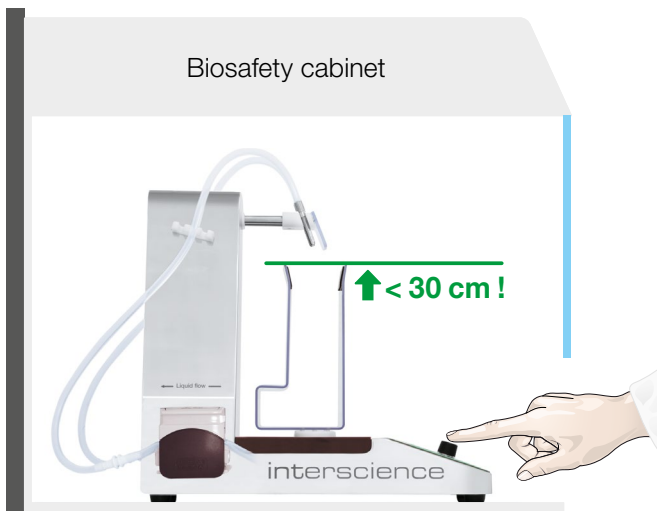
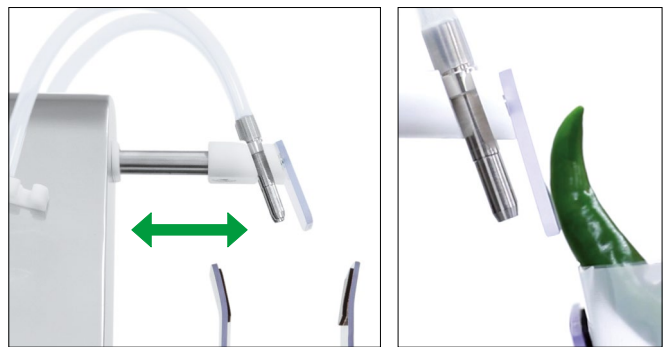
World's fastest dilutor:

With a booster kit, the Dilu**Flow** are the fastest dilutors on the market. Only 8 s⁽³⁾ to dispense 225 mL!

Robotic arm⁽²⁾ & nozzle protection plate

The robotic arm enables you to drop the sample safely and easily without contamination risks. Tested more than 1.3 million times, its reliability is guaranteed.

The protective plate protects the nozzle from any contact with the sample.



Ultra low profile

The Dilu**Flow** have the lowest bag opening on the market, less than 30 cm!

This allows a better comfort and ergonomics, especially when you use the DiluFlow in a biosafety cabinet.

GeckoGrip gripping system

Inspired by a gecko's paw, this new GeckoGrip material will hold the bag without pressing hard. GeckoGrip sticking properties apply in dry and wet surfaces.

GeckoGrip long lasting material can be washed with soap and alcohol.

PATENTED





LightCode

An intuitive indicator of the status of the Dilu**Flow**. The degree of accuracy of the finished dilution is displayed: green > 98%, orange > 95% or red < 95%. It will also turn blue if the scale is not stable, thus telling you to wait for stabilization.



Green:
Accuracy > 98%



Orange:
Accuracy > 95%



Red:
Accuracy < 95%



Blue:
Scale stabilizing

DripTray

In case culture media is spilt on the unit, the new patented DripTray can be removed to be rinsed, avoiding a tedious cleaning of the unit.

PATENTED



Multi-Dispensing⁽¹⁾

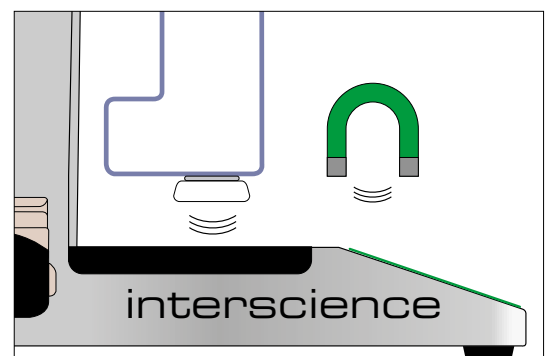
This unique patented mode allows you to serially dispense in small containers such as 9 mL tubes, without having to weigh each tube, by doing just one calibration on the scale.

PATENTED

Magnetic BagOpen

The 2 points magnetic attachment of the **BagOpen** guarantee a stable platform for better measuring accuracy, and provide a natural protection of the weight sensor when removing the bag.

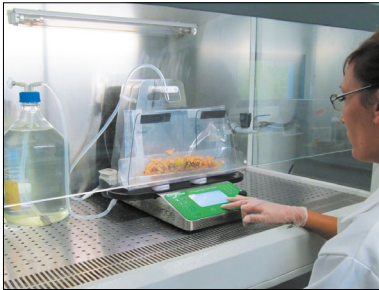
PATENTED SHAPE



(1) Only on Dilu**Flow** Elite (2) Only on Dilu**Flow** Pro and Dilu**Flow** Elite (3) Dilution time for a 25 g sample diluted at 1/10 on a Dilu**Flow** Elite with booster kit

Multiple ways to use a DiluFlow

☞ The lab operators like the low profile of the DiluFlow platform ☞



New standards make it necessary to work under a laminar flow for the dilution work, and this can create operational problems.

Our lab operators like the ultra-low profile of the DiluFlow platform because they do not need to bend themselves anymore to insert the sample in the bag.

My DiluFlow can handle up to 5000 g load if you add the Jumbo kit option, to dilute in large bags. It is useful because you do not need to buy an extra machine for large samples.

■ Brigitte, lab technician

☞ The DiluFlow Elite, in the 1 kg version, has an accuracy of 0.01 g ☞



In the cosmetics industry, the raw materials cost a fortune, sometimes more than 10000 euros per kilo ! That is why we only work with small amounts, usually 1 g.

The DiluFlow Elite, in 1 kg version, has an accuracy of 0.01 g, which enables us to get $\pm 2\%$ weighing accuracy. Moreover we use the tongs platform option which are efficient pliers to hold our tubes, to directly place the tube under the liquid flow every time.

■ Dylan, lab manager

☞ Accurate, user-friendly and reliable... ☞



We analyze between 10 and 20 samples per day in our lab.

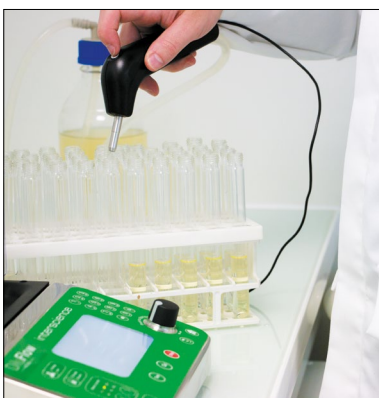
We looked at all dilutors on the market and most of them looked far too complex to use or too sophisticated.

We are now using a DiluFlow which matches our requirements completely. The keyboard is really easy-to-use; only 2 keys to press for a dilution.

■ Alain, microbiological coordinator



☞ 3-in-1 equipment ☞



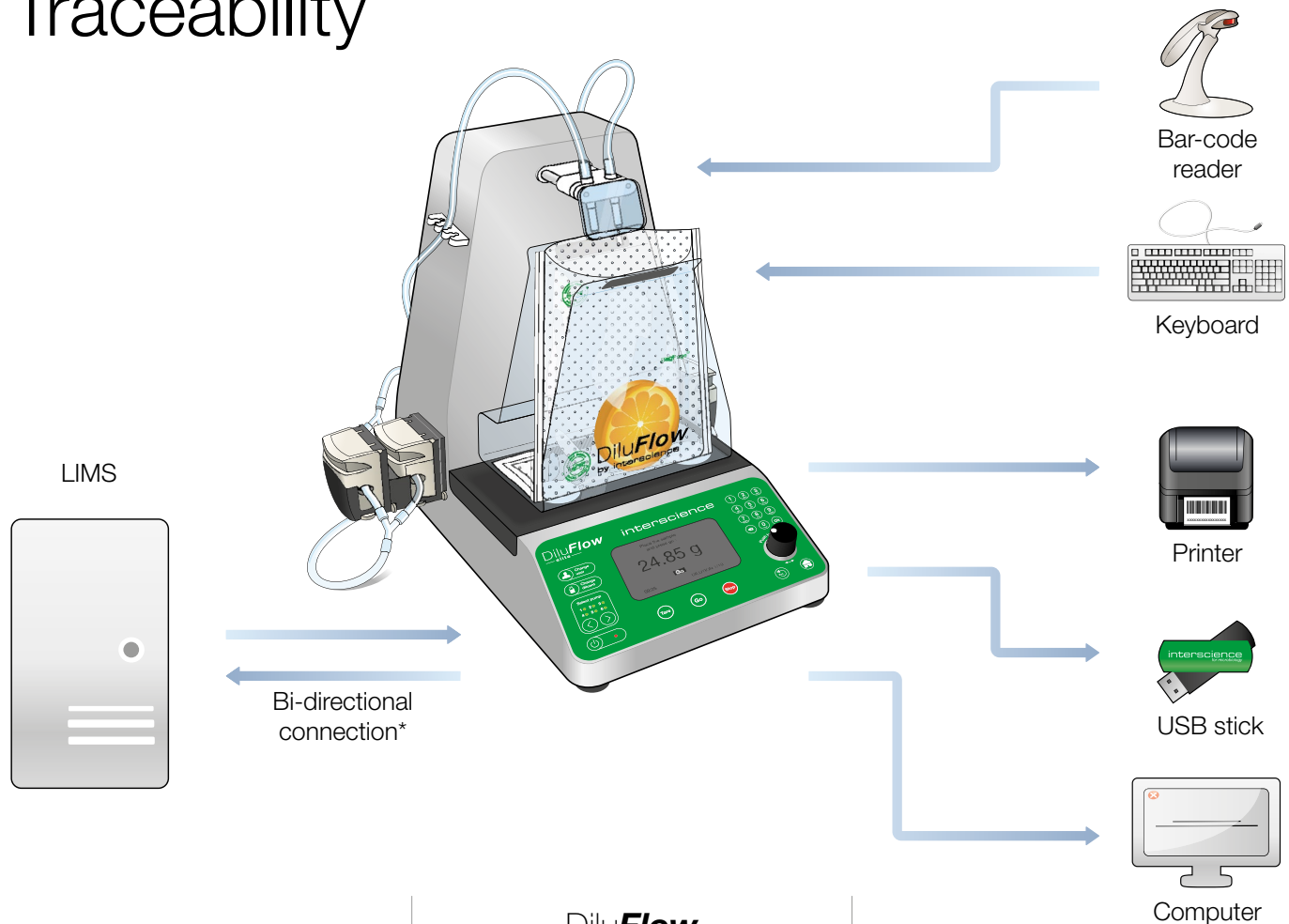
What I really like about my DiluFlow Elite is the Multi-Dispensing function. I use it to fill 9 mL dilution tubes. Before that, I was using a peristaltic pump, but each time, I had to calibrate the pump with a weighing platform to get $\pm 2\%$ accuracy.

With the DiluFlow Elite, you just put the first tube on the platform and the calibration is automatic. You can then directly distribute the doses in the tubes with the HandyGun, without having to weigh each tube. It is as if I had 3-in-1 equipment: a peristaltic pump, a scale and a dilutor!

■ Dominique, quality control engineer



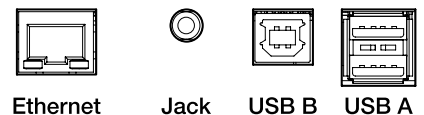
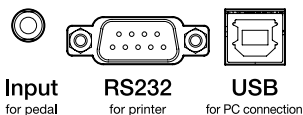
Traceability



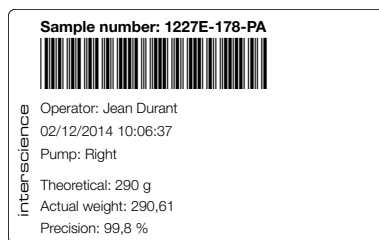
Dilu**Flow**
Dilu**Flow** Pro

Dilu**Flow** Elite

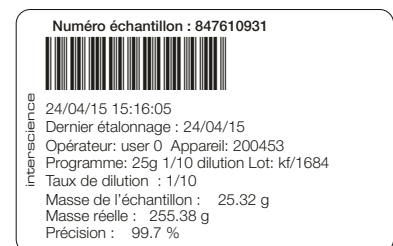
Available ports



Data export to a printer



* Printed via the supervision software



* Printed directly from the Dilu**Flow** Elite

Import and export of computer & network data

Traceability :

- USB connection to computer and data export via the Dilu**Flow** supervision software
- Excel™ file export from the supervision software

Full traceability :

- Data export to Excel™
- Data export to USB key (CSV)
- Web service bi-directional connectivity to the LIMS

* Contact us for a list of compatible LIMS.

How to order



DiluFlow

Single pump (3 kg)
Double pump (3 kg)

Ref 501 103
Ref 501 203



DiluFlow Pro

Single pump (5 kg)
Double pump (5 kg)

Ref 502 105
Ref 502 205



DiluFlow Elite

Single pump (1 kg)
Double pump (1 kg)
Single pump (5 kg)
Double pump (5 kg)

Ref 503 101
Ref 503 201
Ref 503 105
Ref 503 205

DiluFlow is delivered with 1 distribution arm, 1 drip tray 400, 1 or 2 pumps, 1 dispensing assembly (GL45 - Ø 6.4 mm) per pump, 1 USB cable, 1 supervision software, 1 power cord, 1 BagOpen 400 for dilutors (stainless steel), 1 user manual, 1 set of 10 GeckoGrip, 1 set of adhesive gum, blender bags samples, 1 conformity certificate / warranty card.
DiluFlow Pro is delivered with 1 drip tray 400, 1 or 2 pumps, 1 protection for dispensing nozzles, 1 dispensing assembly (GL45 - Ø 6.4 mm) per pump, 1 USB cable, 1 supervision software, 1 power cord, 1 BagOpen 400 for dilutors (stainless steel), 1 user manual, 1 set of 10 GeckoGrip, 1 set of adhesive gum, 1 Allen wrench, blender bags samples, 1 conformity certificate / warranty card.
DiluFlow Elite is delivered with 1 drip tray 400, 1 or 2 pumps, 1 protection for dispensing nozzles, 1 dispensing assembly (GL45 - Ø 6.4 mm) per pump, 1 USB stick, 1 USB cable, 1 USB A Male / A Female extension cable, 1 power cord, 1 BagOpen 400 for dilutors (stainless steel), 1 user manual, 1 set of 10 GeckoGrip, 1 set of adhesive gum, 1 Allen wrench, blender bags samples, 1 conformity certificate / warranty card.

Accessories

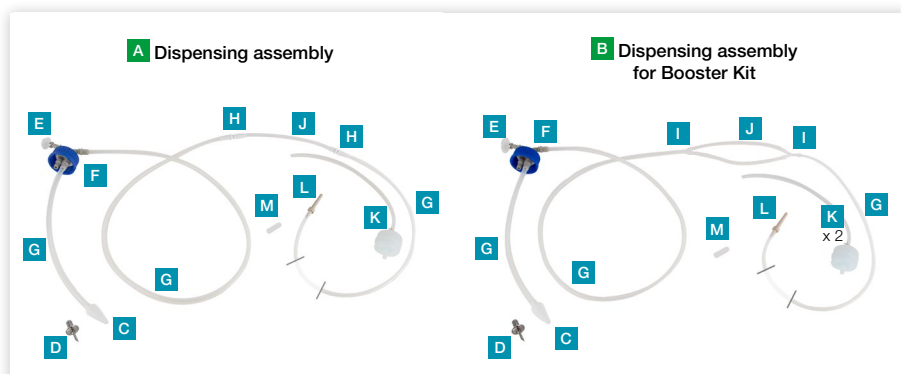
	Réf.	Désignation	Descriptif
	410 130	Film pour imprimante	Film transfert thermique
	410 150	Film for printer	Thermal transfer film for printer
	413 002	2L bottle (GL45)	Set of 3 GL45 glass bottle (2L), autoclavable
	505 001	BagOpen 400 for dilutors	Stand for 400 mL bags
	505 002	Weighing platform	To weigh and support a container. Not delivered with container.
	505 003	Tongs platform	To hold a tube (Ø 10 to 60 mm). Not delivered with tube.
	505 004	Adjustable distribution system (3)	Ideal to fill various containers
	505 005	Adjustable distribution system (4)	Ideal to fill various containers
	505 007	Pump module (1)	External module with single pump + 513 043: Dispensing assembly (GL45 - Ø 6.4 mm)
	505 008	6 nozzles holder (1)	Can hold up to 6 nozzles
	505 009	GeckoGrip for BagOpen 400/3500	Set of 10 adhesives to hold the bag in place - Compatible with BagOpen 400 and 3500
	505 010	Integrable stand for broth bags	Integrated to the unit, to hold one broth bag. Delivered with 4 screws + Torx screwdriver.
	505 014	BagOpen 80/100 mL for dilutors	Stand for 80/100 mL bags. Compatible with gravimetric dilutors range.

	Réf.	Désignation	Descriptif
	505 015	GeckoGrip for BagOpen 80/100	Set of 10 adhesives to hold the bag in place. DiluFlow 80/100
	505 016	BagOpen 400 for dilutors (stainless steel)	Stainless steel stand for 400 mL bags
	505 020	Jumbo kit (stainless steel)	BagOpen 3500 (stainless steel) + 3500 mL DripTray + anti splash extension for nozzle holder + GeckoGrip. Compatible with DiluFlow Pro and DiluFlow Elite 5 kg.
	507 008	Foot pedal	For hands-free dispensing. Connection with a 3.5 mm Jack
	511 500	Booster kit	Pump extension with stainless steel roller to speed up dispensing. Comes with 2 silicone hoses for pump (20 cm each), internal diameter 6.4 mm + 2 "Y" connectors.
	513 001	5L bottle (GL45)	GL45 glass bottle (5L), autoclavable
	513 005	Certified standard weight (500 g)	500 g COFRAC calibrated weight, type F1
	513 015	Independent stand for broth bags	Independent stand for 2 broth bags
	513 053	Holder for Steriwater dispensing assembly set	1 holder for dispensing assembly with 0.2 µm filter + 1 knurled head screw
	521 012	Sticker for printer	Set of 2 rolls of 1000 stickers for thermal printer - Label size: 70 x 45 mm
	521 110	Paper for printer	Set of 2 thermal paper rolls for printer
	522 000	Barcode reader (1)	Barcode reader (1D / 2D)
	561 001	Handy Gun (1)	Dispensing control with handy gun including electronic start button

(1) Only on DiluFlow Elite (2) Only on DiluFlow Pro and DiluFlow Elite 5 kg (3) Only on DiluFlow (4) Only on DiluFlow Pro and DiluFlow Elite

Tubings

Complementary products



- C** Tube weight
- D** Trocar
- E** PTFE filter
- F** Autoclavable GL45 stopper
- G** Silicone tubings (L 23.5 cm - tubings Ø 3.2 mm)
- H** Straight connectors
- I** Y connectors
- J** Tygon™ tubings for pump
- K** Tubings Tygon™ for pump with 0,2 µm filter
- L** Nozzles
- M** Protection cap

Ref	Code	Designation	Quantity					
				DiluFlow®	DiluFlow® Pro	DiluFlow® Elite 5kg	DiluFlow® Elite 1kg	
505 012	L	Adjustable nozzles (L 23.5 cm - tubings Ø 3.2 mm)	5	•	•		•	
505 013	L	Adjustable nozzles (L 12 cm - tubings Ø 6.4 mm)	5	•	•	•		
513 008	B	Booster kit dispensing assembly (GL45 - Ø 3.2 mm)	1	•	•	•	•	
513 009	G J I	Tubings + Y (Ø 3.2 mm)	5	•	•	•	•	
513 011	J	Tubings for pump (Ø 4.8 mm)	6	•	•	•	•	
513 016	G H J L M	Dispensing assembly for broth bags (Ø 4.8 mm)	1	•	•	•		
513 020	D	Trocar	1	•	•	•	•	
513 023	E	PTFE filters 0.2 µm (Ø 25 mm)	5	•	•	•	•	
513 024	L M	Nozzles (tubings Ø 4.8 - 8 mm)	5	•	•	•	•	
513 039	C	Tube weights (Ø 6 mm)	5	•	•	•	•	
513 040	L M	Nozzles (tubings Ø 1.6 - 3.2 mm)	5	•	•	•	•	
513 041	B	Booster kit dispensing assembly (GL45 - Ø 6.4 mm)	1	•	•	•	•	
513 042	G J I	Tubings + Y (Ø 6.4 mm)	5	•	•	•	•	
513 043	A	Dispensing assembly (GL45 - Ø 6.4 mm)	1	•	•	•	•	
513 044	G H J	Tubings (Ø 6.4 mm)	5	•	•	•	•	
513 045	A	Dispensing assembly (GL45 - Ø 3.2 mm)	1	•	•	•	•	
513 047	G H J	Tubings (Ø 3.2 mm)	5	•	•	•	•	
513 048	M	Cap (Ø 1.6 - 3.2 mm)	5	•	•	•	•	
513 049	M	Cap (Ø 4.8 - 8 mm)	5	•	•	•	•	
513 050	A	Dispensing assembly with 0.2 µm filter (GL45 - Ø 6.4 mm)	1	•	•	•	•	
513 051	B	Dispensing assembly + Y with 0.2 µm filter (GL45 - Ø 6.4 mm)	1	•	•	•	•	
513 052	K	Tubings for pump with filter 0.2 µm (Ø 6.4 mm)	2	•	•	•	•	
561 302	J	Tubings for pump (Ø 3.2 mm)	6	•	•	•	•	
561 304	J	Tubings for pump (Ø 6.4 mm)	6	•	•	•	•	
561 401	F	Autoclavable GL45 stopper + 0.2 µm filter	1	•	•	•	•	
561 403	H	Straight connectors (tubings Ø 6.4 - 8 mm)	6	•	•	•	•	
561 404	H	Straight connectors (tubings Ø 3.2 - 4.8 mm)	6	•	•	•	•	
562 401	I	Y connectors (tubings Ø 6.4 - 8 mm)	6	•	•	•	•	
562 402	I	Y connectors (tubings Ø 3.2 mm)	6	•	•	•	•	
562 403	I	Y connectors (tubings Ø 4.8 mm)	6	•	•	•	•	

BagMixer
Lab blenders

Models (mL) :
100/400/3500

JumboMix
interScience

BagFilter
Lateral filter bag

Models (mL) :
400/3500

BagPage
Full-page filter bag

Models (mL) :
100/400/3500

BagLight
Non-filter bag

Models (mL) :
100/400/3500

BagOpen
Bag opener/holder

Models (mL) :
80/100 - 400 - 3500

BagRack
Storage rack for bags

Models (mL) :
80/100 - 400
3500 (2/4 compartments)

BagClip
Closing clip

Models (mL) :
80/100 - 400 - 3500

BagPipet & BagTips
Fixed volume pipet & sterile tips

BagTips Models:
Regular (19 cm)
Jumbo (24 cm)

BagSeal
Thermal sealing unit

For bags
up to 2000 mL

PetriPile
Petri dish storage stack

Models (ø) :
55 - 65 - 90 - 150 mm

Technical specifications

	DiluFlow 3 kg		DiluFlow Pro 5 kg		DiluFlow Elite 5 kg		DiluFlow Elite 1 kg	
	Single pump	Double pump	Single pump	Double pump	Single pump	Double pump	Single pump	Double pump
Reference	501 103	501 203	502 105	502 205	503 105	503 205	503 101	503 201
304L stainless steel body		✓		✓		✓		✓
BagOpen height < 30 cm		✓		✓		✓		✓
Removable drip tray (Patented)		✓		✓		✓		✓
BagOpen with GeckoGrip system (Patented)		✓		✓		✓		✓
Magnetic stand for BagOpen (Patented shape)		✓		✓		✓		✓
LightCode: color status LED		✓		✓		✓		✓
Compatible with Booster Kit		✓		✓		✓		✓
Stainless casting electromechanical core		✓		✓		✓		✓
Robotic arm		-		✓		✓		✓
Compatible with Jumbo Kit		-		✓		✓		-
Protection for dispensing nozzle		-		✓		✓		✓
Up to 6 pumps		-		-		✓		✓
Multi-dispensing mode (Patented)		-		-		✓		✓
Powder mode		-		-		✓		✓
Weighing mode		-		-		✓		✓
Auto-tare function		-		-		✓		✓
24 editable programs		-		-		✓		✓
Bidirectional connectivity		-		-		✓		✓
1 g dilution to 1/10 th		-		-		-		✓
Resolution up to 200 g	0.01 g							
Weighing range	0.1 to 3000 g		0.1 to 5000 g			0.1 to 1000 g		
Max weight without support	4500 g		7000 g			1500 g		
Weighing accuracy	0 to 100 g: ± 0.05 g 100 to 3000 g: ± 0.05 %		0 to 100 g: ± 0.05 g 100 to 5000 g: ± 0.05 %			0 to 20 g: ± 0.01 g 20 to 1000 g: ± 0.05 %		
Dilution factor	1/2 to 1/99				1/2 to 1/1000, customizable fractions			
Minimum weight required for dilution	5 g							
Minimum weight required for distribution	5 g							
Dilution/distribution accuracy	> 99% in Standard or Accurate mode (in optimal conditions)							
Dilution time for a 25g sample diluted to 1/10 th	< 9 s (with Booster Kit in Fast mode)				< 8 s (with Booster Kit in Fast mode)			
Dilution time for a 375g sample diluted to 1/10 th	-		< 80 s (with Booster Kit in Fast mode)		< 75 s (with Booster Kit in Fast mode)		-	
Distribution time for 90 mL	< 7 s (with Booster Kit in Fast mode)				< 6 s (with Booster Kit in Fast mode)			
Distribution time for 225 mL	< 10 s (with Booster Kit in Fast mode)				< 9 s (with Booster Kit in Fast mode)			
Max number of pumps	2 integrated				2 integrated + 4 external			
Dilution/distribution mode	Fast - Standard - Accurate							
Language	English				French, English			
Voltage - Frequency	100-240 V~ 50-60 Hz							
Warranty	1 year							
Spare parts availability	10 years							
In compliance with	ISO 7218 - ISO 6887							
Traceability	Printer / Supervision software (export to Excel™ / OpenOffice™, CSV file, printer)				Printer / Export to Excel™ file / CSV file Export on USB key / Bi-directional connection to LIMS			
Type of LIMS connection	-				File sharing, web service			
Exported data	Sample weight / Total weight / Dilution factor / Dilution accuracy / Right or left pump + with supervision software: Sample number / Name of operator / Date / Time				Sample weight / Total weight / Dilution factor / Dilution accuracy / Diluent / Sample number / Diluent lot number / Date / Time / Last calibration date / Name of operator / Name of program			
Connection	RS232 output for printer / USB port for computer / Jack output for foot pedal connection							

* with a recommended dilution factor of 10

Certified production:



Products made for INTERSCIENCE by Interlab, an ISO 9001 certified company.

Your local distributor

www.interscience.com

interscience

PARIS

Phone: +33 (0)1 34 62 62 61 - Email: info@interscience.com

FRANKFURT

Phone: +49 611 7238 7770 - Email: sales.germany@interscience.com

BOSTON

Phone: +1 781 937 0007 - Email: sales.usa@intersciencelab.com

SHANGHAI

Phone: +86 (0)21-64739390 - Email: sales.china@interscience.cn

SINGAPORE

Phone: +65 6977 7232 - Email: sales.asia@interscience.com

TOKYO

Phone: +81 3 6712 9715 - Email: sales.japan@interscience.com